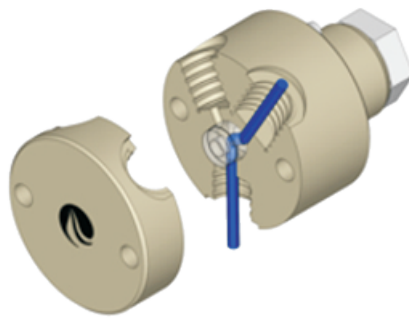
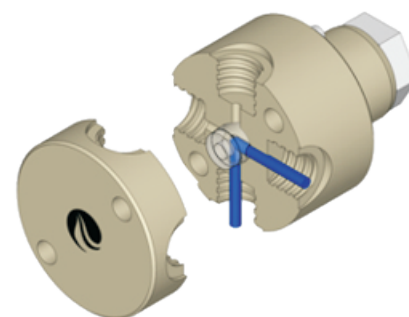
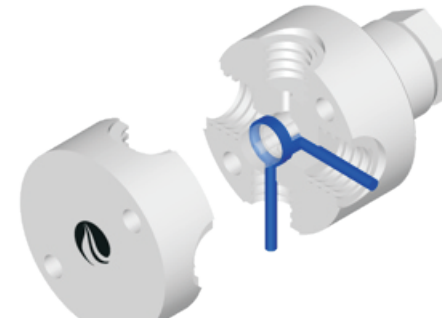


# Rotary Valves

## C-Series Replacement Valves - 1/4-28 Thread Ports

Note: Valve body shown sectioned for clarity

Description	Materials (Body/Plug)	Catalog Number	Flow Path (Blue)
"Y" Valve 120° 3-port	PEEK/UHMWPE	10020	
	PEEK/PTFE	10021	
	PCTFE/UHMWPE	10022	
	PCTFE/PTFE	10023	
90° 4-port	PEEK/UHMWPE	10040	
	PEEK/PTFE	10041	
	PCTFE/UHMWPE	10042	
	PCTFE/PTFE	10043	
Distribution Valve	PCTFE/UHMWPE	10062*	
	PCTFE/PTFE	10063*	

\*S/N 336945 or earlier may require firmware upgrade.

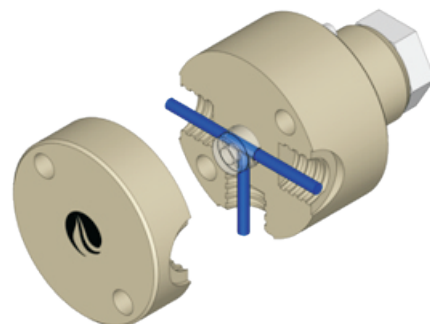
Description	Materials (Body/Plug)	Catalog Number	Flow Path (Blue)
-------------	--------------------------	-------------------	---------------------

T Valve 3-port

PEEK/UHMWPE

10115\*

\*S/N 336945 or earlier may require firmware upgrade.



T Valve 4-port

PEEK/UHMWPE

10125\*

\*S/N 336945 or earlier may require firmware upgrade.

